

THE STRUCTURE OF THE BCFMWU

PROVINCIAL EXECUTIVE

Elected governing body of the Union between conventions, directed by the Constitution.

Provincial President

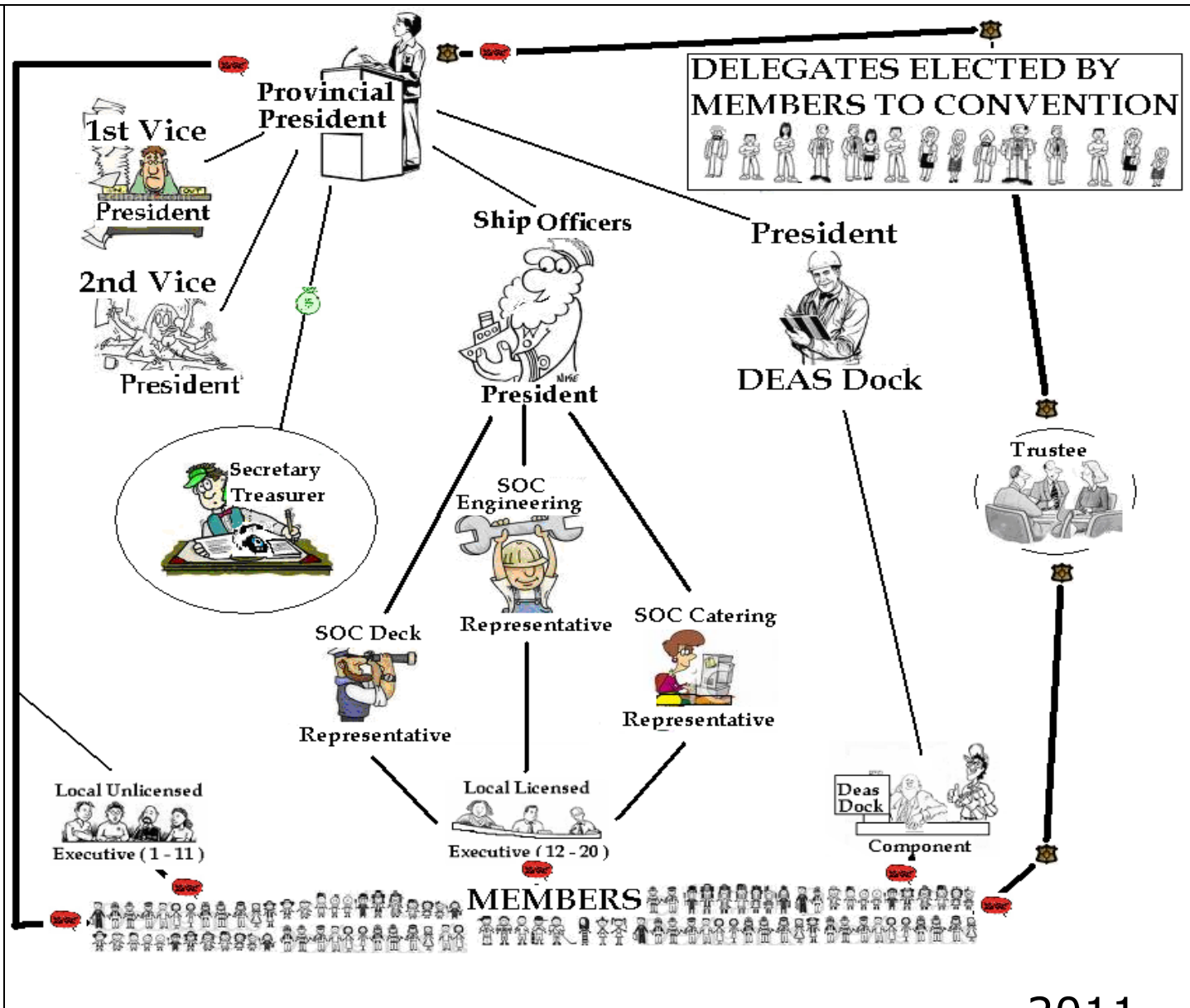
the chief provincial executive officer of the Union and chairperson of the Provincial Executive

DELEGATES

(Triennial Convention) a meeting of accredited delegates, held every three years, to provide direction from the membership to direct the Provincial Executive.

Trustees exercise supervision over the Union.

Ships' Officers' Component ("SOC")
Licensed component.



THE STRUCTURE OF THE BCFMWU